

PUF-8 and TCER-1 are essential for normal levels of multiple mRNAs in the *C. elegans* germline

Kumari Pushpa, Ganga Anil Kumar and Kuppuswamy Subramaniam*

SUMMARY

PUF family proteins are well-conserved regulators of cell proliferation in different developmental processes. They regulate target mRNAs by promoting degradation or by influencing translation through interaction with the translation initiation machinery. Here we show that *Caenorhabditis elegans* PUF-8 functions redundantly with the nuclear protein TCER-1 in the post-transcriptional maintenance of at least six germline mRNAs. The levels of spliced mRNAs in the *puf-8(-) tcer-1(-)* double mutant are only 10-30% of the wild type, whereas the unspliced forms increase by ~2- to 3-fold compared with the wild type. These two proteins colocalise at the inner nuclear periphery, and their absence leads to reduced germ cell proliferation and to sterility. A yeast two-hybrid screen of 31 components of the nuclear pore complex and mRNA processing machineries identified seven proteins involved in mRNA export as potential partners of PUF-8. One of these, the nuclear cap-binding protein NCBP-2, colocalises with PUF-8 in the nucleus. A 50 amino acid N-terminal domain of PUF-8 is essential for interaction with NCBP-2 and for PUF-8 to function redundantly with TCER-1. These results reveal two important unexpected aspects of PUF proteins: that, in addition to the C-terminal PUF domain, the N-terminal domain is crucial for PUF function, and that PUF proteins have a novel role in mRNA maintenance. We propose that PUF proteins, in addition to their known cytoplasmic roles, participate in nuclear processing and/or export of mRNAs.

KEY WORDS: PUF-8, TCER-1, *C. elegans*, Germ cells, mRNA processing, mRNA export

INTRODUCTION

Proteins of the PUF family are present in diverse eukaryotes including yeast, plants and metazoans ranging from invertebrates to mammals. These proteins regulate a wide variety of developmental processes, including embryonic patterning, stem cell maintenance and neuronal adaptation (Ariz et al., 2009; Crittenden et al., 2002; Forbes and Lehmann, 1998; Kaye et al., 2009; Schweers et al., 2002; Subramaniam and Seydoux, 2003; Tadauchi et al., 2001; Walser et al., 2006). Although many of these functions are species specific, regulation of stem cell proliferation appears to be the most ancient and well-conserved function of PUF proteins.

Evidence so far indicates that the PUF proteins function as post-transcriptional regulators. Results from large-scale experiments suggest that these proteins influence the expression of a large number of mRNAs (Galgano et al., 2008; Gerber et al., 2004; Kershner and Kimble, 2010; Mainpal et al., 2011; Morris et al., 2008). However, PUF-mediated regulation has been established only for a few of them. In the case of these well-demonstrated target mRNAs, the relevant PUF protein has been shown to function by direct binding to specific sequences within the 3' UTR (Crittenden et al., 2002; Kadyrova et al., 2007; Murata and Wharton, 1995; Zhang et al., 1997). A few examples of positive regulation have been reported, but in most cases PUF proteins negatively regulate

their target mRNAs (Kaye et al., 2009). The mechanism of positive regulation is not clear, whereas negative regulation is known to be accomplished either by promoting mRNA degradation or interfering with translation initiation (Deng et al., 2008; Goldstrohm et al., 2006; Goldstrohm et al., 2007). The common theme emerging from these studies is that PUF proteins are sequence-specific regulators of mRNAs in the cytoplasm.

A characteristic of PUF proteins is the presence of a conserved RNA-binding domain called the PUF domain, which contains eight imperfect repeats of ~40 amino acids each, in their C-terminal region (Wickens et al., 2002). The entire PUF domain is essential for RNA binding and, in the case of the *Drosophila* PUF protein Pumilio, the *pumilio* mutant phenotypes are mostly rescued by the PUF domain alone (Wharton et al., 1998). Intriguingly, all PUF proteins contain a region of ~200-1100 amino acids in their N-terminal region that is distinct from the PUF domain. The functional significance of this rather large N-terminal region is not known. Its amino acid sequence has not been conserved among the different PUF family members and does not share similarity with any other known protein motif.

Here we report the identification of an unexpected novel function for the *Caenorhabditis elegans* PUF protein PUF-8. In germ cells, in addition to being in the cytoplasm, we find that PUF-8 is also present in the nucleus, where it colocalises with at least two nuclear proteins involved in mRNA processing/export. PUF-8 functions redundantly with one of them, TCER-1, which is predicted to link transcription with splicing, to ensure normal levels of germ cell proliferation and fertility. Our results indicate that PUF-8 functions along with TCER-1 at a post-transcriptional step to maintain normal levels of certain germline mRNAs. Further, our yeast two-hybrid experiments suggest that PUF-8 interacts with some of the mRNA processing/export machinery components, for which a 50 amino acid region of its N-terminus is crucial. Importantly, the same 50 amino acid N-terminal region is essential to rescue the *puf-8(-) tcer-1(-)* double mutant.

Department of Biological Sciences and Bioengineering, Indian Institute of Technology, Kanpur 208016, India.

*Author for correspondence (subbu@iitk.ac.in)

This is an Open Access article distributed under the terms of the Creative Commons Attribution Non-Commercial Share Alike License (<http://creativecommons.org/licenses/by-nc-sa/3.0>), which permits unrestricted non-commercial use, distribution and reproduction in any medium provided that the original work is properly cited and all further distributions of the work or adaptation are subject to the same Creative Commons License terms.

Accepted 11 January 2013

MATERIALS AND METHODS

C. elegans strains

Strains used in this study are described in supplementary material Table S1. They were maintained as described (Brenner, 1974), except that all transgenic lines were grown at 25°C to avoid silencing of the germline-expressed transgenes (Strome et al., 2001). Generation of double-mutant and double-transgenic lines, as well as transgene rescue experiments, were performed using standard genetic techniques. RNAi experiments were carried out as described (Mainpal et al., 2011).

Construction of transgenes

The *tcer-1* transgene construct pPK6 was prepared as follows: a 1813 bp genomic region upstream of the *tcer-1* start codon and a part of the coding region (up to the *Bam*HI site) was PCR amplified using primers KS2315 and KS2132 and cloned between *Sac*II and *Bam*HI sites of the pBluescript KS+ plasmid vector (see supplementary material Table S2 for primer sequences). The remainder of the coding region was amplified using primers KS2133 and KS2134 and cloned between the *Bam*HI and *Sma*I sites of the plasmid resulting from the above cloning. In the resulting plasmid, GFP coding sequences were PCR amplified from pMP15 (Ariz et al., 2009) using primers KS2135 and KS2326 and inserted between the *Sma*I and *Sal*I sites. To this, 1730 bp of *tcer-1* downstream genomic sequences, which were amplified using primers KS2316 and KS2361, were added between *Sal*I and *Apa*I sites. A 5596 bp genomic fragment containing the *unc-119* gene was PCR amplified using primers KS1222 and KS1223 and introduced into the above plasmid between *Ngo*MIV and *Sac*II as the transgene selection marker. The GFP in pPK6 was replaced with mCherry coding sequences amplified using KS2944 and KS2945 to generate pPK20 (supplementary material Table S1).

The *nbp-2* transgene construct pPK46 was generated as follows: the histone H2B sequences in pKS114 (Ariz et al., 2009) were replaced with *nbp-2* coding sequences amplified from *C. elegans* genomic DNA using primers KS3703 and KS3704. One copy of the cMyc epitope was included as part of the KS3704 primer. The GFP coding sequences were then replaced with the mCherry sequences amplified using KS3526, which contains another copy of cMyc, and KS2978. Three additional copies of the cMyc epitope were incorporated upstream of mCherry using primers KS3709 and KS3710. These two partially overlapping primers were annealed, converted into full double strands by primer extension and digested with *Bgl*II and *Bam*HI. The resulting fragment was ligated at the *Bam*HI site present upstream of the mCherry sequences. The *emr-1* transgene construct pPK19 is similar to pPK46 except that it does not contain cMyc sequences.

The transgene constructs bearing *puf-8* deletions were made as follows: the *Bam*HI-*Not*I fragment of pMP15, containing part of *puf-8* and *gfp* coding sequences, was replaced with the PCR fragment amplified from pMP15 using primers KS3022 and KS3175 to introduce the HA epitope at the C-terminus of GFP. This construct, termed pPK25, served as the parental plasmid for all *puf-8* deletion constructs. pPK30, which does not contain amino acids 3-143, was generated in two steps. First, the upstream and coding sequences of *puf-8* in pPK25 were removed by *Kpn*I digestion. To this, a PCR fragment bearing the upstream *puf-8* sequences up to the second amino acid, amplified using primers KS109 and KS3303, was added at the *Kpn*I site. Second, the sequences coding PUF-8 amino acids 144-535 were amplified using primers KS3304 and KS3320 and inserted at the *Apa*I site introduced by primer KS3303. Other deletion constructs were generated by similar two-step clonings by substituting KS3303 and KS3304 with the appropriate primers: KS3303 and KS3675 for pPK45 (Δ 3-49aa), KS3551 and KS3609 for pPK39 (Δ 51-100aa), and KS3612 and KS3304 for pPK44 (Δ 111-143aa).

All constructs were generated in duplicate – two parallel, independent PCR and cloning events – and introduced into the *unc-119(-)* strain by biolistic bombardment as described (Jadhav et al., 2008; Praitis et al., 2001). We routinely obtained 10-15 independent lines per construct; at least three independent transgenic lines with an identical expression pattern were used for the rescue of mutants. The three lines tested yielded similar results in the rescue experiments described in this study.

Fluorescence microscopy

Gonad dissection and DAPI staining were performed as described (Ariz et al., 2009). For leptomycin B (Sigma, L2913) treatment, ~100 young adults were incubated for 2.5 hours at 25°C in 50 μ l M9 buffer containing 1 ng/ml leptomycin B. The worms were then recovered and examined for GFP fluorescence. To detect NCBP-2 protein, dissected gonads were fixed in aldehyde fixative (3.5% formaldehyde, 0.25% glutaraldehyde, 0.1 M potassium phosphate, pH 7.2) for 15 minutes, followed by incubation in methanol for 5 minutes and acetone for 10 minutes, both at -20°C. Non-specific epitopes were blocked by incubating fixed gonads in PBT (0.1% BSA and 0.1% Tween 20 in phosphate-buffered saline) for 30 minutes. The gonads were then incubated overnight at 4°C with 1:500 dilution of anti-human CBP20 antibody (200 μ g/ml rabbit polyclonal; Santa Cruz, sc-48793). After washing three times with PBT, the gonads were incubated with 1:50 dilution of FITC-conjugated goat anti-rabbit secondary antibody (1 mg/ml; Jackson ImmunoResearch, 115-095-068) overnight at 4°C, then washed three times with PBT and mounted in Vectashield (Vector Laboratories). These immunostained gonads, as well as worms expressing GFP and mCherry fluorescence reporters, were observed using a Zeiss Axioskop II mot plus microscope. Fluorescence images were acquired using an Axiocam HRm camera and deconvolved using Axiovision software (both Carl Zeiss).

Quantitation of mRNAs

The growth rate of *puf-8(-) tcer-1(-)* worms was slower than that of the wild type and both single mutants. Therefore, to compare RNA levels in age-matched populations, we first determined the time required by the different genotypes to initiate spermatogenesis. For this, we collected embryos from gravid hermaphrodites for a 2-hour period and allowed them to hatch and grow. We monitored germline development in these synchronous populations of larvae by DAPI staining at different time points. Compared with ~58 hours at 20°C for the wild-type and *tcer-1(-)*, the *puf-8(-)* worms took ~64 hours and *puf-8(-) tcer-1(-)* took ~94 hours to initiate spermatogenesis.

We isolated total RNA from 100 synchronously grown worms at the above time points using Tri Reagent (Sigma) following the manufacturer's protocol. The RNA samples were treated with DNase I for 15 minutes, heat inactivated and used for reverse transcription (RT) using oligo(dT)₁₈ as the primer. To reduce errors arising from pipetting smaller volumes, the cDNA was diluted to 500 μ l and 10 μ l aliquots were used as template for the PCR amplification. We used Southern hybridisation with appropriate radiolabelled probes to detect the amplified products. Hybridisation signals were detected and quantified using a phosphorimager (Bio-Rad). Use of Southern hybridisation enabled detection while product accumulation was still in the linear range, which was determined for each product by performing hybridisation at different cycle points. To further control variations, the whole process, from growth of worms to RT-PCR, was repeated at least eight times. To account for small variations caused by the slight reduction in the number of germ cells in the double mutant at the above mentioned time point, a set of least-varying mRNAs, which were ~1.5-fold higher in the wild type than in the double mutant, were used for normalisation. In addition, we calculated the mRNA to pre-mRNA ratio, which is independent of the overall RNA levels. Although more laborious than the real-time PCR methods, the Southern hybridisation-based approach avoided the non-specific signals arising from primer dimers. To account for variations in the RNA and cDNA yields, and to further account for any variation in the germ cell numbers, we used the levels of germline *hip-1* mRNA (<http://nematode.lab.nig.ac.jp>), which did not vary significantly in these experiments, for normalisation. Primers used for RNA quantitation are listed in supplementary material Table S3.

Yeast two-hybrid assay

The method described by James et al. (James et al., 1996) was followed. Briefly, PCR-amplified products were inserted into the vector pGBDU-C2 or pACT2 to serve as the DNA-binding (BD) or activation domain (AD) fusions, respectively. The BD and AD fusions tested are listed in supplementary material Tables S4 and S5, respectively. In the case of the PUF-8 deletions N16-BD and N18-BD, the two fragments flanking the

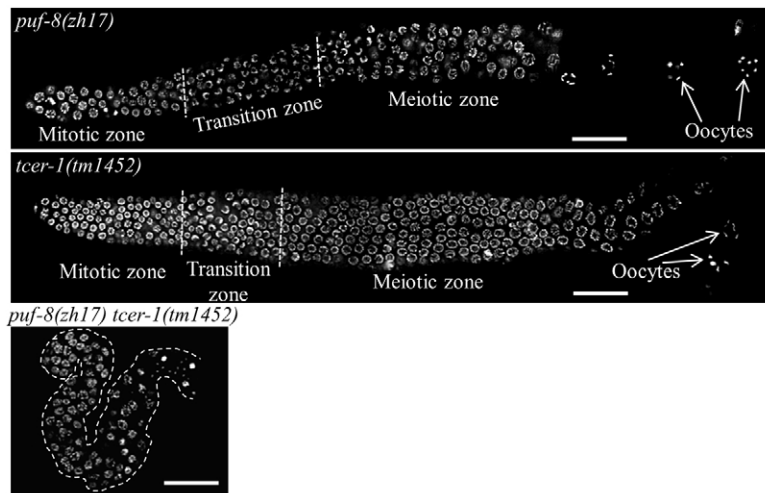


Fig. 1. *puf-8* functions redundantly with *tcer-1*. Dissected *C. elegans* adult gonads of the indicated genotype stained with DAPI. Left, distal; right, proximal. The three images are at identical magnification. The double-mutant gonad is significantly smaller than either single mutant and it contains fewer germ cells and no gametes. Scale bars: 25 μ m.

deletion were amplified and ligated separately, and then reamplified using KS3022 and KS3024, which was then cut with *Bgl*III and cloned into the *Bam*HI site of pGBDU-C2. All constructs were prepared in duplicate as described above. Yeast strain PJ69-4 α (James et al., 1996) was transformed as described (Gietz and Woods, 2002) and colonies were selected on appropriate selection plates. To test interaction between BD and AD fusions, three colonies from each transformation were suspended in 50 μ l aliquots of water and 10 μ l aliquots were spotted on (1) agar plates lacking histidine but containing 2 mM 3-aminotriazole and (2) agar plates without adenine. Only the BD and AD combinations that grew robustly on both selection plates are reported in Fig. 4.

RESULTS

PUF-8 functions redundantly with TCER-1, a component of the RNA processing machinery, to regulate germ cell proliferation

Depletion of PUF-8 results in several germ cell defects. These include reduced proliferation of germline stem cells, dedifferentiation of primary spermatocytes into germ cell tumours, failure of the sperm/oocyte switch and improper chromosome segregation during meiosis (Ariz et al., 2009; Bachorik and Kimble, 2005; Subramaniam and Seydoux, 2003). Surprisingly, these phenotypes are temperature sensitive: even strains homozygous for the null alleles of *puf-8*, although subfertile, can be maintained continuously when grown at 20°C (Subramaniam and Seydoux, 2003).

To identify gene(s) that potentially compensate for the lack of PUF-8 at 20°C, a synthetic genetic screen was carried out on the *puf-8(+/-)* background (Vaid et al., 2013). To map one of the synthetic mutants identified in that screen, we performed an RNAi screen of genes present in a limited genetic interval on chromosome II on the *puf-8(zh17)* genetic background, which is a strong loss-of-function allele. This RNAi screen identified *tcer-1* as functionally redundant with *puf-8*. Consistent with the earlier results, 100% of the *puf-8(zh17)* worms were fertile at 20°C ($n=150$). Similarly, all of the *tcer-1(RNAi)* worms were fertile and did not show any observable defects ($n=500$). By contrast, the *puf-8(zh17) tcer-1(RNAi)* double-mutant worms were 100% sterile at 20°C ($n=500$). Subsequently, we confirmed the RNAi results by generating a *puf-8(-) tcer-1(-)* genetic double-mutant strain using *tcer-1(tm1452)*, which has a 392 bp deletion that includes most of the second exon of *tcer-1*. Similar to the *tcer-1(RNAi)* worms, *tcer-1(tm1452)* worms were normal ($n=500$). In the double-mutant worms, the total number of germ cells was severely reduced and the morphology of the chromatin, as revealed by DAPI staining, was abnormal. Although

a few of these worms produced sperm, they did not develop a normal oocyte (Fig. 1). We conclude that *puf-8* and *tcer-1* function redundantly to ensure normal levels of germ cell proliferation.

The lack of any observable phenotype in *tcer-1(tm1452)* is most likely due to its functional redundancy with a partial duplication, *ZK1127.6*, present ~1.4 kb upstream and on the opposite strand with respect to the *tcer-1* locus [data obtained from WormBase (www.wormbase.org)]. Consistent with this notion, *ZK1127.6(tm2782) tcer-1(RNAi)* resulted in 40% embryonic lethality ($n=100$). Although a deletion allele, *ZK1127.6(tm2782)*, is available, owing to the very close proximity of the two loci we were unable to generate the *ZK1127.6(tm2782) tcer-1(tm1452)* double mutant. However, *puf-8(zh17) ZK1127.6(tm2782)* worms were fertile ($n=500$), which indicates that this partial duplication does not function redundantly with *puf-8*. Further, a transgene expressing *ZK1127.6::GFP* under the control of the upstream and downstream sequences of *ZK1127.6* did not show any expression in the germline (data not shown).

PUF-8 colocalises in the nucleus with TCER-1

TCER-1 has been annotated as a transcription elongation regulator based on its similarity to the mammalian protein CA150 (TCERG1) and its yeast orthologue PRP40p (Ghazi et al., 2009). CA150 has been shown to be essential for mRNA processing and, based on its ability to interact with the C-terminal domain (CTD) of RNA polymerase II and the components of the spliceosome, CA150 has been implicated in coupling transcription and splicing (Lin et al., 2004; Pearson et al., 2008). To begin to address its functional redundancy with PUF-8, we determined the distribution pattern of TCER-1 in the germline using TCER-1::GFP and TCER-1::mCherry transgenes. Both of these transgenes were expressed using the promoter and downstream sequences of *tcer-1*, and were able to restore fertility in *puf-8(-) tcer-1(-)* worms. As shown in Fig. 2A, TCER-1::GFP was present in all germ cell nuclei, starting from the mitotic cells at the distal end to the oocytes at the proximal end of the gonad. TCER-1::mCherry showed an identical expression pattern (data not shown). Both of these transgenes were expressed in somatic nuclei as well (data not shown).

We confirmed the nuclear localisation of the TCER-1::mCherry fusion protein using a double-transgenic line carrying both TCER-1::mCherry and GFP::LEM-2 – a nuclear envelope marker (Gorjánác et al., 2007) – transgenes (Fig. 2A). At higher magnification, we noticed that the TCER-1 reporter fusions were present at the inner periphery of the nucleus, often in a crescent-

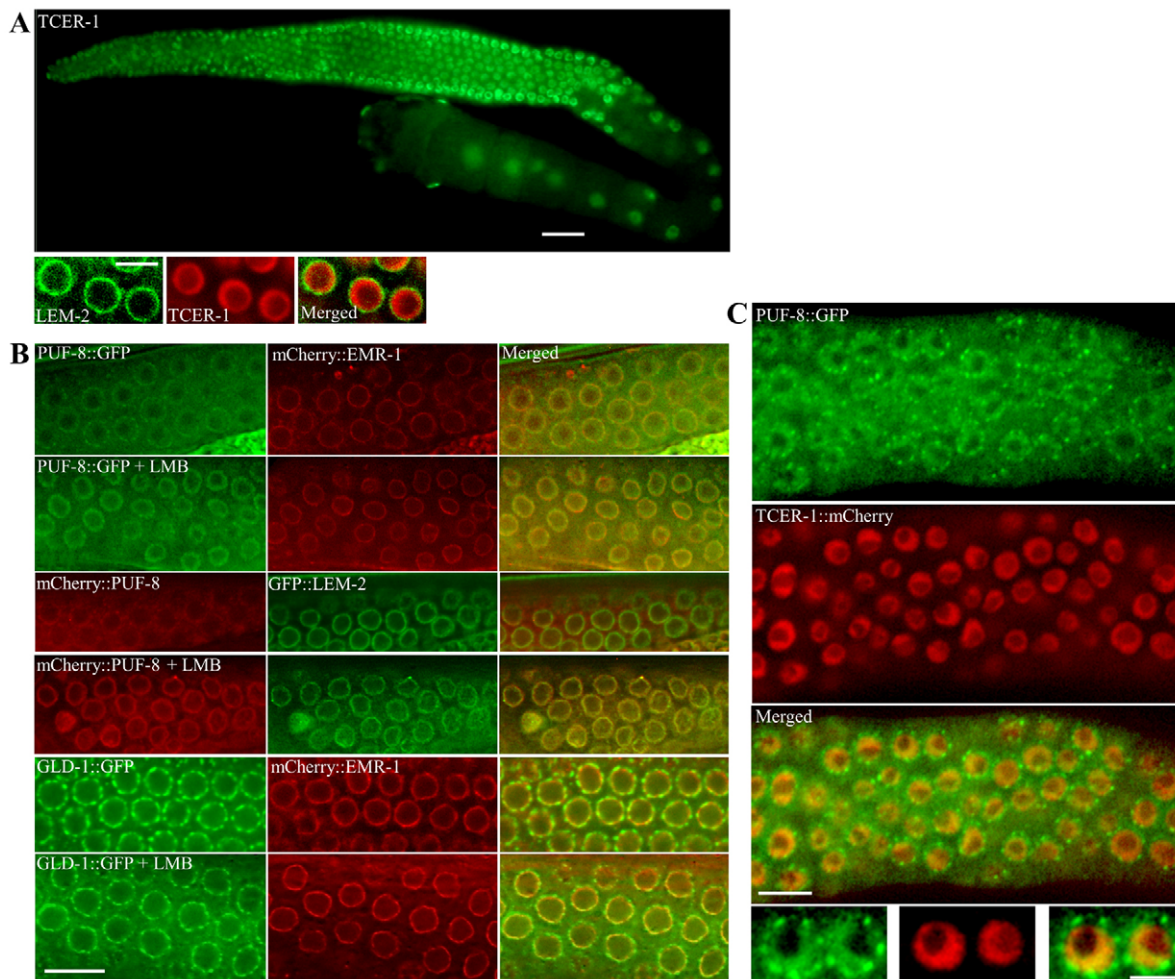


Fig. 2. PUF-8 and TCER-1 colocalise at the inner nuclear periphery. (A) Expression pattern of *tcer-1::gfp* transgene in a wild-type background (top) and of *gfp::lem-2*, a nuclear envelope marker, and *tcer-1::mCherry* transgenes (bottom). Only a few germ cells from the distal part of the gonad are shown at higher magnification. Left, distal; right, proximal. (B) Row 1 (from top) shows expression patterns of PUF-8::GFP and mCherry::EMR-1, another nuclear envelope marker, in worms carrying both transgenes. Row 3, PUF-8 is fused to mCherry and the nuclear envelope is visualised using the GFP::LEM-2 marker. Row 5, expression patterns of GLD-1::GFP (shown here as a control) and mCherry::EMR-1. Rows 2, 4 and 6 are as rows 1, 3 and 5, respectively, but after treatment with leptomycin B (LMB). (C) Expression patterns of PUF-8::GFP and TCER-1::mCherry in worms carrying both transgenes. Beneath, two nuclei from each panel shown at a higher magnification. Except for A (top), images have been deconvolved using the Iterative Deconvolution module of Axiovision software to enhance the axial resolution of the fluorescence signal. (B,C) Only a part of the distal gonad, revealing a few germ cell nuclei, is shown. Scale bars: 25 μm in A (top); 10 μm in B and C (top); 5 μm in A (bottom) and C (bottom).

shaped fashion (Fig. 2A,C). However, we did not detect any fluorescence signal corresponding to either of the TCER-1 reporter fusions in the cytoplasm.

Since removal of PUF-8 did not affect TCER-1 expression (data not shown), we examined whether PUF-8 functions in the nucleus along with TCER-1. An earlier study from our laboratory reported that PUF-8 is present on P granules (Ariz et al., 2009). Since weak nuclear signals might have been missed, we re-examined these transgenic lines with the help of a nuclear envelope marker. For this, we generated a double-transgenic line that carries both PUF-8::GFP and mCherry::EMR-1 transgenes. The PUF-8::GFP transgene rescues the *puf-8(-)* mutant (Ariz et al., 2009), and EMR-1 serves as a nuclear envelope marker (Gorjánác et al., 2007). As reported previously (Ariz et al., 2009), we observed a perinuclear distribution of PUF-8::GFP that is reminiscent of germ cell-specific P granules. Significantly, we noticed PUF-8::GFP in the nucleus as well, where it was distributed in a diffuse pattern at the inner periphery of the

nucleus (Fig. 2B). In several nuclei, the PUF-8::GFP distribution was asymmetrical, with a crescent-shaped pattern that was strikingly similar to that of TCER-1.

To confirm the nuclear presence of PUF-8, we treated the worms with leptomycin B, a known blocker of nuclear export (Nakiely and Dreyfuss, 1999). As would be expected for a protein that shuttles between cytoplasm and nucleus, leptomycin B treatment led to the accumulation of PUF-8::GFP at the inner periphery of the nucleus (Fig. 2B). Nuclear localisation of PUF-8 revealed by PUF-8::GFP does not seem to be an artefact of GFP fusion: a similar fusion with GLD-1, which is another P granule-associated RNA-binding protein, was not present in the nucleus and did not accumulate in the nucleus following leptomycin B treatment (Fig. 2B).

To further confirm the presence of PUF-8 in the nucleus, we examined the expression pattern of PUF-8 using the mCherry reporter. Surprisingly, the nuclear presence of mCherry::PUF-8 was

not obvious in the untreated worms. Since mCherry is known to have a weaker fluorescence intensity and less signal stability than GFP (Shaner et al., 2005), we suggest that the low levels of PUF-8 present at the inner nuclear periphery could not be detected with the mCherry fusion. However, previous studies have shown that leptomycin B treatment, by blocking nuclear export, can cause significant nuclear accumulation of shuttling proteins such that their nuclear presence can be readily detected (Fukuda et al., 1997; Zheng and Guan, 1994). Consistently, upon leptomycin B treatment, mCherry::PUF-8 became concentrated near the nuclear envelope, which was strikingly similar to the behaviour of PUF-8::GFP (Fig. 2B). We then generated double-transgenic lines expressing both PUF-8::GFP and TCER-1::mCherry fusions to test whether these proteins colocalise. As shown in Fig. 2C, these two proteins indeed show significant overlap in several germ cell nuclei. We conclude that PUF-8 is present in the same region of the germ cell nucleus as TCER-1.

PUF-8 functions redundantly with TCER-1 to maintain normal levels of mature mRNAs

Since the yeast and mammalian orthologues of TCER-1 have been implicated in mRNA processing (Abovich and Rosbash, 1997; Pearson et al., 2008), we investigated whether PUF-8 and TCER-1 have a role in mRNA processing. We measured the levels of unspliced and spliced versions of several mRNAs in *puf-8(-)*, *tcer-1(-)* and *puf-8(-) tcer-1(-)* mutant worms and compared them with wild type. We selected 16 mRNAs that are known to be expressed in the germline (Kim et al., 2001) [data obtained from The Nematode Expression Pattern Database (<http://nematode.lab.nig.ac.jp>)]. Seven of these have recently been identified as potential targets of PUF-8 (Mainpal et al., 2011). We monitored RNA levels using quantitative RT-PCR in synchronously grown populations of worms (see Materials and methods). Selective amplification of pre-mRNAs was achieved by designing one PCR primer to match an intron and the other to match an exon. The mature mRNAs were amplified using oligonucleotides belonging to two exons separated by at least one intron as PCR primers. As the level of *hip-1* mRNA, which encodes an HSP70-interacting protein, did not vary significantly among these samples, it was used to normalise variations arising from differences in the amount of RNA extracted from different samples.

As shown in Fig. 3, in the *puf-8(-) tcer-1(-)* double mutant, the levels of six of the 16 mRNAs that we measured, namely *egg-5*, *pal-1*, *cyb-2.1*, *pos-1*, *spn-4* and *oma-1* mRNAs, were only ~10–30% of the wild type. By contrast, the pre-mRNA levels of all but one of them – the unspliced version of *oma-1* mRNA could not be amplified – showed a ~2- to 3-fold increase in the double mutant compared with the wild type. The levels of the unspliced and spliced forms of these mRNAs did not vary significantly between the wild type and single mutants. These results show that PUF-8 and TCER-1 function redundantly to maintain normal levels of the spliced form of these mRNAs.

PUF-8 and TCER-1 interact with mRNA processing/export components in a yeast two-hybrid assay

The mammalian orthologue of TCER-1 has been shown to interact with the components of mRNA processing/export machineries (Deckert et al., 2006; Goldstrohm et al., 2001; Lin et al., 2004; Makarov et al., 2002; Rappsilber et al., 2002). Therefore, we selected the *C. elegans* orthologues of these components and tested

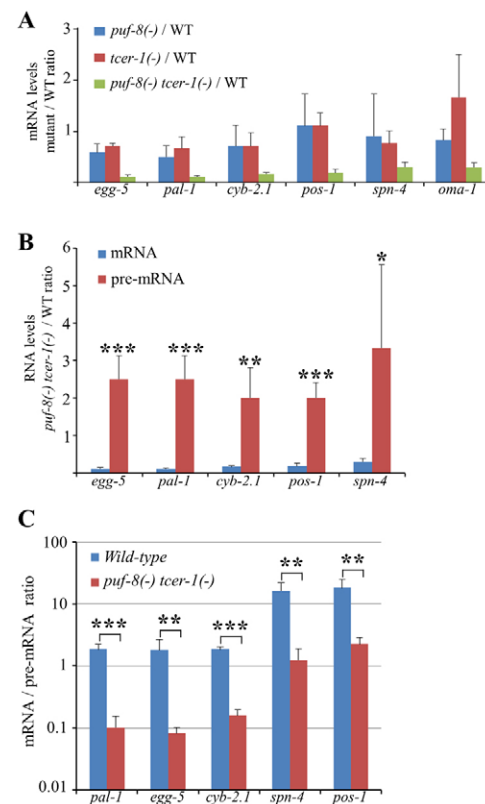


Fig. 3. The levels of several germline mRNAs are dependent on PUF-8 and TCER-1. (A) Mutant to wild type ratios of the indicated mRNA levels quantitated by RT-PCR (see Materials and methods). (B) Comparison of the levels of the spliced (mRNA) and unspliced (pre-mRNA) versions of the indicated mRNAs in the *puf-8(-) tcer-1(-)* double mutant. *** $P=0.0003$; ** $P=0.0038$; * $P=0.0344$; Student's *t*-test, mRNA versus pre-mRNA levels. (C) Comparison of mRNA/pre-mRNA ratio between the wild type and the *puf-8(-) tcer-1(-)* double mutant. This ratio is independent of overall RNA levels, and thus eliminates potential inaccuracies arising from variations in the overall RNA levels between the wild type and double mutant. *** $P=0.0001$; ** $P=0.003$; Student's *t*-test. Error bars indicate s.d.

them in yeast two-hybrid assays for their ability to interact with TCER-1. Of the 31 proteins that we were able to test (supplementary material Table S5), TCER-1 interacted with two of them, namely THOC-3 and SNR-3 (Fig. 4).

To gain insight into the nature of the functional redundancy between PUF-8 and TCER-1, we then tested whether PUF-8 similarly interacts with any of these 31 proteins. We found that PUF-8 interacted with the splicing factor PHI-11, the nuclear cap-binding protein NCBP-2, poly(A)-binding protein PAB-1, C27F2.10, which is the *C. elegans* orthologue of the yeast TREX 2 complex protein THP1p, and three nuclear pore complex (NPC) components, namely NPP-1, NPP-14 and RAE-1 (Fig. 4). These three NPC complex proteins are the *C. elegans* orthologues of the mammalian NPC components Nup54, Nup214 and Rae1, respectively (Galy et al., 2003). Their yeast orthologues are Nup57, Nup159 and Gle2p (Rodriguez et al., 2004; Strambio-De-Castillia et al., 2010). These three NPC components, the TREX 2 complex, the cap-binding complex and the poly(A)-binding protein play crucial roles in transcription-coupled mRNA processing and export (Brune et al., 2005; Iglesias and Stutz, 2008; Köhler and Hurt, 2007;

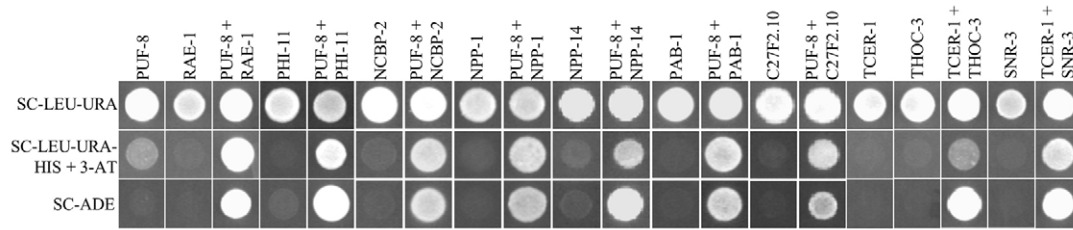


Fig. 4. PUF-8 and TCER-1 interact with mRNA processing/export components in the yeast two-hybrid assay. Growth of yeast strains carrying the various constructs (labelled at top) in media lacking the indicated nutrients (left). In row 2, the minimal medium used contains 2 mM 3-aminotriazole (3-AT). PUF-8 was expressed as a Gal4BD fusion and all others were Gal4AD fusions. Panels marked with a single protein are negative controls expressing the indicated fusion protein along with either Gal4BD or Gal4AD alone. SC, synthetic complete medium; LEU, leucine; URA, uracil; HIS, histidine; ADE, adenine. Growth observed in rows 2 and 3 indicates activation of the HIS3 and ADE2 reporters, respectively. These two reporters are under the control of two different GAL4-responsive promoters; activation of both reporters provides strong support for the functional reconstitution of GAL4 by the interacting protein pairs (James et al., 1996). Therefore, to avoid potential false positives, only those fusion protein pairs showing robust growth on both selection plates (rows 2 and 3) were scored as interacting pairs.

Rodriguez et al., 2004). Significantly, out of the eight NPC components tested, PUF-8 showed interaction only with the three that have been directly implicated in mRNA export (Gorsch et al., 1995; Murphy et al., 1996; Terry and Went, 2007).

In an initial attempt to establish whether PUF-8 interacts *in vivo* with any of the proteins identified by the yeast two-hybrid assay, we chose NCBP-2, for which specific antibodies were available, and examined whether it colocalised with PUF-8::GFP in the nucleus. We generated double-transgenic lines that express both of these proteins in the germline. We expressed NCBP-2 as a fusion protein tagged with the cMyc epitope and the mCherry reporter in the germline using the *pie-1* promoter. In these lines, cMyc::NCBP-2::mCherry was present in all germ cell nuclei. We further validated this expression pattern using an antibody specific for the human nuclear cap-binding protein CBP20 (NCBP2), which is known to recognise the worm NCBP-2 in immunostaining experiments (Lall et al., 2005). Although the anti-CBP20 antibody showed intense staining near the inner nuclear periphery, it also showed some punctate staining in the cytoplasm, which is potentially due to cross-reactivity with a cytoplasmic protein that shares similarity with NCBP-2. We confirmed the nuclear localisation by generating double-transgenic lines expressing both cMyc::mCherry::NCBP-2 and the nuclear envelope marker GFP::LEM-2.

If NCBP-2 indeed interacts with PUF-8, then these proteins would colocalise. To test this, we generated double-transgenic lines

expressing both cMyc::mCherry::NCBP-2 and PUF-8::GFP fusion proteins. As shown in Fig. 5, these proteins exhibited significant colocalisation in the nucleus. Unfortunately, owing to the low levels of PUF-8::GFP, we were unable to detect it in western blots and, as a consequence, we could not test the interaction between NCBP-2 and PUF-8 using the co-immunoprecipitation strategy.

The N-terminal domain of PUF-8 is essential for interaction with mRNA processing/export components in the yeast two-hybrid assay and for redundancy with TCER-1

To uncover the biological significance of the interactions revealed by the yeast two-hybrid assays, we sought to define the amino acids of PUF-8 that are crucial for these interactions, and then test whether these residues are crucial for PUF-8 function *in vivo*. We generated a series of truncations and deletions of PUF-8 and tested their ability to interact with three of the interactors described above, namely NCBP-2, RAE-1 and C27F2.10, in the yeast two-hybrid assay. This analysis revealed that the N-terminal, and not the PUF domain-containing C-terminal, region of PUF-8 is necessary and sufficient for the interactions. Further, amino acids 51-100 were found to be crucial for the ability of PUF-8 to interact with all three proteins (Fig. 6A).

We then generated transgene constructs carrying similar deletions in PUF-8 and tested their ability to rescue the *puf-8(-)* and *puf-8(-)*

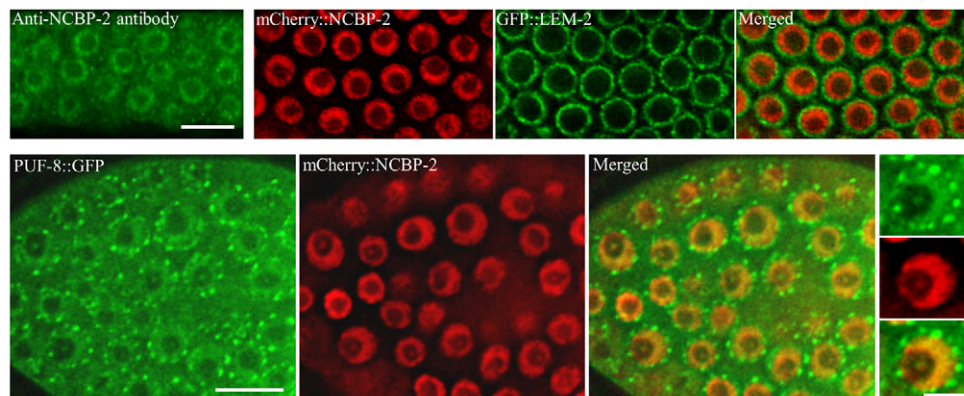


Fig. 5. PUF-8 colocalises with the nuclear cap-binding protein NCBP-2. The expression pattern of NCBP-2 as revealed by immunostaining with anti-human CBP20 antibody, the human orthologue of NCBP-2, is shown top left. All other images show the expression patterns of the indicated transgene-expressed fusion proteins. In the bottom row, single nuclei from each panel are shown at higher magnification to the right. Scale bars: 10 μ m (top and bottom left); 5 μ m (bottom right).

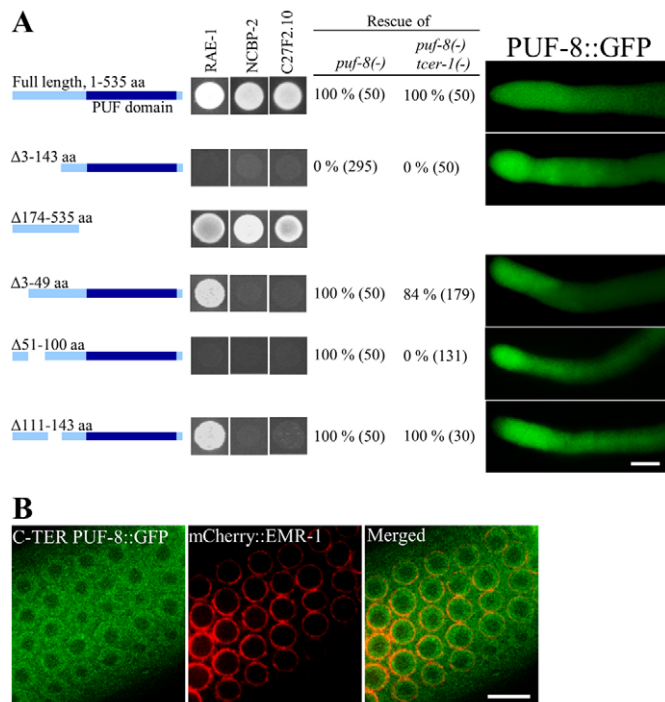


Fig. 6. A 50 amino acid N-terminal domain of PUF-8 is crucial for both protein-protein interactions and functional redundancy with TCER-1. (A) (Left) Yeast two-hybrid assay as in Fig. 4 but using the BD fusions of various PUF-8 N-terminal deletions and the AD fusions indicated above each panel. The regions deleted are illustrated alongside. (Centre) Rescue of the indicated mutant strain by *puf-8::gfp* transgenes bearing the same deletions used in the yeast two-hybrid assay. The number of worms observed is given in parenthesis. (Right) Expression patterns of the corresponding transgenes in the distal gonad as visualised by GFP fluorescence. The level and pattern of expression were approximately the same for all the transgenes. Transgenic lines bearing deletion of amino acids 174-535 could not be generated. (B) Expression patterns of the PUF-8 C-terminal region (amino acids 144-535) fused to GFP and the nuclear envelope marker mCherry::EMR-1 in worms carrying both transgenes. Scale bars: 20 μ m in A; 10 μ m in B.

tcer-1(-) mutant worms (Fig. 5A). These constructs express the PUF-8 open reading frame as a PUF-8::GFP fusion under the control of *puf-8* upstream and downstream sequences. As reported above, the transgene with the full-length PUF-8 coding region restored fertility to *puf-8(-)* mutant worms. In addition, we found that this full-length construct could restore fertility to the *puf-8(-) tcer-1(-)* double mutant as well. By contrast, the transgene expressing only the C-terminal region of PUF-8 (amino acids 144-535) failed to rescue the *puf-8(-)* single mutant itself. Deletion of amino acids 3-49 or 111-143 did not significantly affect the ability of the transgene to rescue *puf-8(-)* or *puf-8(-) tcer-1(-)* worms. By contrast, deletion of amino acids 51-100, which were crucial for PUF-8 interaction with RAE-1, NCBP-2 and C27F2.10 in the yeast two-hybrid assay, failed to rescue the *puf-8(-) tcer-1(-)* double mutant. Strikingly, this deletion was able to rescue the *puf-8(-)* single mutant (Fig. 6A). To rule out the possibility that some of these constructs were not expressed in the germline, we monitored their expression pattern and level by GFP fluorescence (Fig. 6A).

These results indicate that the N-terminal domain of PUF-8 is crucial for its ability to function redundantly with TCER-1 and suggest that the interactions identified by the yeast two-hybrid

experiments might indeed be relevant *in vivo* for PUF-8 function. As shown in Fig. 6B, the C-terminal half of PUF-8 itself localises to the nucleus, which indicates that the nuclear localisation signal is present within the PUF domain. As a consequence, we were unable to test whether nuclear localisation is essential for PUF-8 to function redundantly with TCER-1.

DISCUSSION

The results presented here uncover two unexpected aspects of PUF proteins. One is the presence of PUF-8 in the nucleus and the requirement of PUF-8 for normal levels of several germline mRNAs. This is surprising because PUF proteins have been thought to function in the cytoplasm and to reduce mRNA levels by recruiting the deadenylase complex (Goldstrohm et al., 2006; Goldstrohm et al., 2007). The second novel aspect of these findings is the importance of the PUF-8 N-terminal domain. Although all PUF proteins contain a large N-terminal region, ranging from 200 to 1000 amino acids, its sequence has not been well conserved and its function is not known. In the case of *Drosophila Pumilio*, the PUF domain seems to be sufficient for mRNA binding, interaction with other protein partners and to rescue the mutant phenotype (Wharton et al., 1998; Sonoda and Wharton, 1999). As a consequence, the N-terminal part of PUF proteins has been largely ignored. Contrary to this, the results of our deletion analysis reveal that this region is functionally important in the case of PUF-8. We predict that the N-terminal domain of other PUF proteins might have similar essential functions.

We find that the levels of six germline mRNAs are significantly reduced in *puf-8(-) tcer-1(-)* double-mutant worms. There are a number of possible reasons for this. First, the difference is due to there being fewer germ cells in the mutant. Second, the effect is at the transcriptional level. These two possibilities are, however, inconsistent with the 2- to 3-fold increase in unspliced mRNAs that we observed in the double mutant compared with the wild type. A third possibility is that the mRNAs are more rapidly degraded in the cytoplasm of the double mutant. Our current results do not completely rule out this possibility – it would have been more convincing had we seen mRNA accumulation in the nucleus by *in situ* hybridisation. Unfortunately, we were unable to detect *in situ* hybridisation signals in the nucleus, presumably owing to very low levels of nuclear RNA. Since the accumulation of aberrantly processed mRNAs will trigger the nuclear degradation machinery, nuclear accumulation might not be in proportion to the level of reduction of processed mRNAs. However, we do not favour the cytoplasmic mRNA degradation model for the following reasons. First, we did not see any expression of TCER-1 outside the nucleus, which is consistent with the known expression patterns of its yeast and mammalian orthologues. Thus, of the two proteins, only PUF-8 is present in the cytoplasm. If the observed reduction in mRNA levels were due to cytoplasmic degradation, then we should have seen the reduction in the *puf-8(-)* single mutant itself. Second, PUF proteins are known to promote the degradation, rather than stability, of mRNAs in the cytoplasm. Finally, as mentioned above, we do see an increase in the levels of unspliced mRNAs in the double mutant (Fig. 3), which points to defects in nuclear mRNA processing or export.

How do PUF-8 and TCER-1 function to maintain mRNA levels? We propose a model in which both proteins promote nuclear mRNA processing and/or export. We speculate that TCER-1, just like its mammalian counterpart, functions as part of the general transcription-coupled export machinery, whereas PUF-8, through its ability to bind specific mRNAs and to interact with proteins

involved in mRNA export, such as NCBP-2, provides an alternative export pathway for some of the mRNAs. This model is consistent both with our current results and the existing literature. Of the eight NPC components tested in the yeast two-hybrid assay, PUF-8 interacted only with those whose yeast orthologues have been shown to directly function in mRNA export. Further, PUF-8 colocalises with NCBP-2, the yeast and mammalian orthologues of which function in mRNA export.

Importantly, we find that the N-terminal region crucial for these interactions is essential for the ability of PUF-8 to function redundantly with TCER-1. Similarly, five out of the six mRNAs with significantly reduced levels in the *puf-8(-) tcer-1(-)* double mutant have been shown previously to affinity purify with PUF-8 (Mainpal et al., 2011). It is important to note that the N-terminus is not essential for the nuclear localisation of PUF-8, as the C-terminal part alone readily localises to the nucleus (Fig. 6B). Thus, the interactions with mRNA export factors do not appear to be crucial for the ability of PUF-8 to enter the nucleus. Although this might be the first report of a nuclear role for a metazoan PUF protein, the nuclear localisation and involvement in RNA processing of PUF proteins have been documented in yeast and plants. For example, the yeast PUF protein Nop9p and the trypanosome PUF7 localise to the nucleolus and function in rRNA maturation (Droll et al., 2010; Thomson et al., 2007). Similar observations have been reported for the *Arabidopsis* PUF protein APUM23 (Abbasi et al., 2010).

As per our model, the presence of PUF-8 in the nucleus will be essential for its function in mRNA processing or export. We were unable to test this because the nuclear targeting signal seems to be within the conserved PUF domain. Our attempts to generate transgenic lines expressing the PUF domain of other worm PUF proteins, which would have established whether they too enable nuclear localisation, did not succeed. However, the PUF domain of human PUM1 has been shown to readily translocate into the nucleus (Kedde et al., 2010), suggesting that nuclear localisation is a conserved feature of the PUF domain. Specific mutations within the PUF domain will be required to identify the nuclear targeting signal, if any. Another prediction is that the mRNA binding is essential for the proposed nuclear function of PUF-8. We are currently testing this prediction using transgenic reporter fusions with the mRNAs identified in this study.

Acknowledgements

We thank Geraldine Seydoux for critical reading of the manuscript and for several useful suggestions; the anonymous reviewers for their valuable comments and suggestions; Alex Hajnal for *puf-8(zh17)*; the Mitani laboratory for *tcer-1(tm1452)* and *zk1127.6(tm2782)*; Susan Strome for *SS747*; and the *C. elegans* Genetics Consortium for XA3507 strains.

Funding

K.P. is a recipient of a National Doctoral Fellowship from the All India Council of Technical Education. This work was supported by the Wellcome Trust and the National Agricultural Innovation Project (NAIP) scheme of the Indian Council of Agricultural Research. Deposited in PMC for immediate release.

Competing interests statement

The authors declare no competing financial interests.

Supplementary material

Supplementary material available online at <http://dev.biologists.org/lookup/suppl/doi:10.1242/dev.087833/-/DC1>

References

Abbasi, N., Kim, H. B., Park, N. I., Kim, H. S., Kim, Y. K., Park, Y. I. and Choi, S. B. (2010). APUM23, a nucleolar Puf domain protein, is involved in pre-ribosomal RNA processing and normal growth patterning in *Arabidopsis*. *Plant J.* **64**, 960-976.

- Abovich, N. and Rosbash, M. (1997). Cross-intron bridging interactions in the yeast commitment complex are conserved in mammals. *Cell* **89**, 403-412.
- Ariz, M., Mainpal, R. and Subramaniam, K. (2009). *C. elegans* RNA-binding proteins PUF-8 and MEX-3 function redundantly to promote germline stem cell mitosis. *Dev. Biol.* **326**, 295-304.
- Bachorik, J. L. and Kimble, J. (2005). Redundant control of the *Caenorhabditis elegans* sperm/oocyte switch by PUF-8 and FBF-1, two distinct PUF RNA-binding proteins. *Proc. Natl. Acad. Sci. USA* **102**, 10893-10897.
- Brenner, S. (1974). The genetics of *Caenorhabditis elegans*. *Genetics* **77**, 71-94.
- Brune, C., Munchel, S. E., Fischer, N., Podtelejnikov, A. V. and Weis, K. (2005). Yeast poly(A)-binding protein Pab1 shuttles between the nucleus and the cytoplasm and functions in mRNA export. *RNA* **11**, 517-531.
- Crittenden, S. L., Bernstein, D. S., Bachorik, J. L., Thompson, B. E., Gallegos, M., Petcherski, A. G., Moulder, G., Barstead, R., Wickens, M. and Kimble, J. (2002). A conserved RNA-binding protein controls germline stem cells in *Caenorhabditis elegans*. *Nature* **417**, 660-663.
- Deckert, J., Hartmuth, K., Boehringer, D., Behzadnia, N., Will, C. L., Kastner, B., Stark, H., Urlaub, H. and Lührmann, R. (2006). Protein composition and electron microscopy structure of affinity-purified human spliceosomal B complexes isolated under physiological conditions. *Mol. Cell. Biol.* **26**, 5528-5543.
- Deng, Y., Singer, R. H. and Gu, W. (2008). Translation of ASH1 mRNA is repressed by Puf6p-Fun12p/elf5B interaction and released by CK2 phosphorylation. *Genes Dev.* **22**, 1037-1050.
- Droll, D., Archer, S., Fenn, K., Delhi, P., Matthews, K. and Clayton, C. (2010). The trypanosome Pumilio-domain protein PUF7 associates with a nuclear cyclophilin and is involved in ribosomal RNA maturation. *FEBS Lett.* **584**, 1156-1162.
- Forbes, A. and Lehmann, R. (1998). Nanos and Pumilio have critical roles in the development and function of *Drosophila* germline stem cells. *Development* **125**, 679-690.
- Fukuda, M., Asano, S., Nakamura, T., Adachi, M., Yoshida, M., Yanagida, M. and Nishida, E. (1997). CRM1 is responsible for intracellular transport mediated by the nuclear export signal. *Nature* **390**, 308-311.
- Galgano, A., Forrer, M., Jaskiewicz, L., Kanitz, A., Zavolan, M. and Gerber, A. P. (2008). Comparative analysis of mRNA targets for human PUF-family proteins suggests extensive interaction with the miRNA regulatory system. *PLoS ONE* **3**, e31164.
- Galy, V., Mattaj, J. W. and Askjaer, P. (2003). *Caenorhabditis elegans* nucleoporins Nup93 and Nup205 determine the limit of nuclear pore complex size exclusion in vivo. *Mol. Biol. Cell* **14**, 5104-5115.
- Gerber, A. P., Herschlag, D. and Brown, P. O. (2004). Extensive association of functionally and cytotopically related mRNAs with Puf family RNA-binding proteins in yeast. *PLoS Biol.* **2**, E79.
- Ghazi, A., Henis-Korenblit, S. and Kenyon, C. (2009). A transcription elongation factor that links signals from the reproductive system to lifespan extension in *Caenorhabditis elegans*. *PLoS Genet.* **5**, e1000639.
- Gietz, R. D. and Woods, R. A. (2002). Transformation of yeast by lithium acetate/single-stranded carrier DNA/polyethylene glycol method. *Methods Enzymol.* **350**, 87-96.
- Goldstrohm, A. C., Albrecht, T. R., Suñé, C., Bedford, M. T. and Garcia-Blanco, M. A. (2001). The transcription elongation factor CA150 interacts with RNA polymerase II and the pre-mRNA splicing factor SF1. *Mol. Cell. Biol.* **21**, 7617-7628.
- Goldstrohm, A. C., Hook, B. A., Seay, D. J. and Wickens, M. (2006). PUF proteins bind Pop2p to regulate messenger RNAs. *Nat. Struct. Mol. Biol.* **13**, 533-539.
- Goldstrohm, A. C., Seay, D. J., Hook, B. A. and Wickens, M. (2007). PUF protein-mediated deadenylation is catalyzed by Ccr4p. *J. Biol. Chem.* **282**, 109-114.
- Gorjánac, M., Jaedicke, A. and Mattaj, J. W. (2007). What can *Caenorhabditis elegans* tell us about the nuclear envelope? *FEBS Lett.* **581**, 2794-2801.
- Gorsch, L. C., Dockendorff, T. C. and Cole, C. N. (1995). A conditional allele of the novel repeat-containing yeast nucleoporin RAT7/NUP159 causes both rapid cessation of mRNA export and reversible clustering of nuclear pore complexes. *J. Cell Biol.* **129**, 939-955.
- Iglesias, N. and Stutz, F. (2008). Regulation of mRNP dynamics along the export pathway. *FEBS Lett.* **582**, 1987-1996.
- Jadhav, S., Rana, M. and Subramaniam, K. (2008). Multiple maternal proteins coordinate to restrict the translation of *C. elegans* nanos-2 to primordial germ cells. *Development* **135**, 1803-1812.
- James, P., Halladay, J. and Craig, E. A. (1996). Genomic libraries and a host strain designed for highly efficient two-hybrid selection in yeast. *Genetics* **144**, 1425-1436.
- Kadyrova, L. Y., Habara, Y., Lee, T. H. and Wharton, R. P. (2007). Translational control of maternal Cyclin B mRNA by Nanos in the *Drosophila* germline. *Development* **134**, 1519-1527.
- Kaye, J. A., Rose, N. C., Goldsworthy, B., Goga, A. and L'Etoile, N. D. (2009). A 3'UTR pumilio-binding element directs translational activation in olfactory sensory neurons. *Neuron* **61**, 57-70.

- Kedde, M., van Kouwenhove, M., Zwart, W., Oude Vrielink, J. A., Elkon, R. and Agami, R. (2010). A Pumilio-induced RNA structure switch in p27-3' UTR controls miR-221 and miR-222 accessibility. *Nat. Cell Biol.* **12**, 1014-1020.
- Kershner, A. M. and Kimble, J. (2010). Genome-wide analysis of mRNA targets for *Caenorhabditis elegans* FBF, a conserved stem cell regulator. *Proc. Natl. Acad. Sci. USA* **107**, 3936-3941.
- Kim, S. K., Lund, J., Kiraly, M., Duke, K., Jiang, M., Stuart, J. M., Eizinger, A., Wylie, B. N. and Davidson, G. S. (2001). A gene expression map for *Caenorhabditis elegans*. *Science* **293**, 2087-2092.
- Köhler, A. and Hurt, E. (2007). Exporting RNA from the nucleus to the cytoplasm. *Nat. Rev. Mol. Cell Biol.* **8**, 761-773.
- Lall, S., Piano, F. and Davis, R. E. (2005). *Caenorhabditis elegans* decapping proteins: localization and functional analysis of Dcp1, Dcp2, and Dcp5 during embryogenesis. *Mol. Biol. Cell* **16**, 5880-5890.
- Lin, K. T., Lu, R. M. and Tarn, W. Y. (2004). The WW domain-containing proteins interact with the early spliceosome and participate in pre-mRNA splicing in vivo. *Mol. Cell Biol.* **24**, 9176-9185.
- Mainpal, R., Priti, A. and Subramaniam, K. (2011). PUF-8 suppresses the somatic transcription factor PAL-1 expression in *C. elegans* germline stem cells. *Dev. Biol.* **360**, 195-207.
- Makarov, E. M., Makarova, O. V., Urlaub, H., Gentzel, M., Will, C. L., Wilm, M. and Lührmann, R. (2002). Small nuclear ribonucleoprotein remodeling during catalytic activation of the spliceosome. *Science* **298**, 2205-2208.
- Merritt, C., Rasoloson, D., Ko, D. and Seydoux, G. (2008). 3' UTRs are the primary regulators of gene expression in the *C. elegans* germline. *Curr. Biol.* **18**, 1476-1482.
- Morris, A. R., Mukherjee, N. and Keene, J. D. (2008). Ribonomic analysis of human Pum1 reveals cis-trans conservation across species despite evolution of diverse mRNA target sets. *Mol. Cell Biol.* **28**, 4093-4103.
- Murata, Y. and Wharton, R. P. (1995). Binding of pumilio to maternal hunchback mRNA is required for posterior patterning in *Drosophila* embryos. *Cell* **80**, 747-756.
- Murphy, R., Watkins, J. L. and Wente, S. R. (1996). GLE2, a *Saccharomyces cerevisiae* homologue of the *Schizosaccharomyces pombe* export factor RAE1, is required for nuclear pore complex structure and function. *Mol. Biol. Cell* **7**, 1921-1937.
- Nakielnny, S. and Dreyfuss, G. (1999). Transport of proteins and RNAs in and out of the nucleus. *Cell* **99**, 677-690.
- Pearson, J. L., Robinson, T. J., Muñoz, M. J., Kornblihtt, A. R. and Garcia-Blanco, M. A. (2008). Identification of the cellular targets of the transcription factor TCERG1 reveals a prevalent role in mRNA processing. *J. Biol. Chem.* **283**, 7949-7961.
- Praitis, V., Casey, E., Collar, D. and Austin, J. (2001). Creation of low-copy integrated transgenic lines in *Caenorhabditis elegans*. *Genetics* **157**, 1217-1226.
- Rappsilber, J., Ryder, U., Lamond, A. I. and Mann, M. (2002). Large-scale proteomic analysis of the human spliceosome. *Genome Res.* **12**, 1231-1245.
- Rodriguez, M. S., Dargemont, C. and Stutz, F. (2004). Nuclear export of RNA. *Biol. Cell* **96**, 639-655.
- Schweers, B. A., Walters, K. J. and Stern, M. (2002). The *Drosophila* melanogaster translational repressor pumilio regulates neuronal excitability. *Genetics* **161**, 1177-1185.
- Shaner, N. C., Steinbach, P. A. and Tsien, R. Y. (2005). A guide to choosing fluorescent proteins. *Nat. Methods* **2**, 905-909.
- Sonoda, J. and Wharton, R. P. (1999). Recruitment of Nanos to hunchback mRNA by Pumilio. *Genes Dev.* **13**, 2704-2712.
- Strambio-De-Castilla, C., Niepel, M. and Rout, M. P. (2010). The nuclear pore complex: bridging nuclear transport and gene regulation. *Nat. Rev. Mol. Cell Biol.* **11**, 490-501.
- Strome, S., Powers, J., Dunn, M., Reese, K., Malone, C. J., White, J., Seydoux, G. and Saxton, W. (2001). Spindle dynamics and the role of gamma-tubulin in early *Caenorhabditis elegans* embryos. *Mol. Biol. Cell* **12**, 1751-1764.
- Subramaniam, K. and Seydoux, G. (2003). Dedifferentiation of primary spermatocytes into germ cell tumors in *C. elegans* lacking the pumilio-like protein PUF-8. *Curr. Biol.* **13**, 134-139.
- Tadauchi, T., Matsumoto, K., Herskowitz, I. and Irie, K. (2001). Post-transcriptional regulation through the HO 3'-UTR by Mpt5, a yeast homolog of Pumilio and FBF. *EMBO J.* **20**, 552-561.
- Terry, L. J. and Wente, S. R. (2007). Nuclear mRNA export requires specific FG nucleoporins for translocation through the nuclear pore complex. *J. Cell Biol.* **178**, 1121-1132.
- Thomson, E., Rappsilber, J. and Tollervey, D. (2007). Nop9 is an RNA binding protein present in pre-40S ribosomes and required for 18S rRNA synthesis in yeast. *RNA* **13**, 2165-2174.
- Vaid, S., Ariz, M., Chaturvedi, A., Anil Kumar, G. and Subramaniam, K. (2013). PUF-8 negatively regulates RAS/MAPK signalling to promote differentiation of *C. elegans* germ cells. *Development* (in press).
- Walser, C. B., Battu, G., Hoier, E. F. and Hajnal, A. (2006). Distinct roles of the Pumilio and FBF translational repressors during *C. elegans* vulval development. *Development* **133**, 3461-3471.
- Wharton, R. P., Sonoda, J., Lee, T., Patterson, M. and Murata, Y. (1998). The Pumilio RNA-binding domain is also a translational regulator. *Mol. Cell* **1**, 863-872.
- Wickens, M., Bernstein, D. S., Kimble, J. and Parker, R. (2002). A PUF family portrait: 3'UTR regulation as a way of life. *Trends Genet.* **18**, 150-157.
- Zhang, B., Gallegos, M., Puoti, A., Durkin, E., Fields, S., Kimble, J. and Wickens, M. P. (1997). A conserved RNA-binding protein that regulates sexual fates in the *C. elegans* hermaphrodite germ line. *Nature* **390**, 477-484.
- Zheng, C.-F. and Guan, K.-L. (1994). Cytoplasmic localization of the mitogen-activated protein kinase activator MEK. *J. Biol. Chem.* **269**, 19947-19952.

Table S1. *C. elegans* strains used in this study

Strains carrying transgenes			
Strain	Transgene	Genotype	Reference
IT213	<i>tcer-1 prom:tcer-1ORF:gfp:tcer-1 3'utr</i>	<i>unc-119(ed3) III; kpIs(pPK6)</i>	This study
IT283	<i>tcer-1 prom:tcer-1ORF:mCherry:tcer-1 3'utr</i>	<i>unc-119(ed3) III; kpIs(pPK20)</i>	This study
IT30	<i>puf-8 prom:puf-8 ORF:gfp:puf-8 3'utr</i>	<i>unc-119(ed3) III; kpIs(pMP15)</i>	(Ariz et al., 2009)
JH2060	<i>pie-1 prom:gfp:gld-1 ORF:gld-1 3'utr</i>	<i>unc-119(ed3) III; axIs1498</i>	(Merritt et al., 2008)
IT560	<i>pie-1 prom:4xcMyc:mCherry:ncbp-2 ORF:cMyc:hip-1 3'utr</i>	<i>unc-119(ed3) III; kpIs(pPK46)</i>	This study
IT305	<i>pie-1 prom:mCherry:emr-1 ORF:hip-1 3'utr</i>	<i>unc-119(ed3) III; kpIs(pPK19)</i>	This study
XA3507	<i>pie-1 prom:gfp:lem-2 ORF:pie-1 3'utr</i>	<i>unc-119(ed3) III; qals3507</i>	(Galy et al., 2003)
IT293	<i>tcer-1 prom:tcer-1ORF:mCherry:tcer-1 3'utr & pie-1 prom:gfp:lem-2 ORF:pie-1 3'utr</i>	<i>unc-119(ed3) III; qals3507; kpIs(pPK20)</i>	This study
IT311	<i>puf-8 prom:puf-8 ORF:gfp:puf-8 3'utr & pie-1 prom:mCherry:emr-1 ORF:hip-1 3'utr</i>	<i>unc-119(ed3) III; kpIs(pMP15); kpIs(pPK19)</i>	This study
IT363	<i>pie-1 prom:gfp:gld-1 ORF:gld-1 3'utr & pie-1 prom:mCherry:emr-1 ORF:hip-1 3'utr</i>	<i>unc-119(ed3) III; axIs1498; kpIs(pPK19)</i>	This study
IT671	<i>pie-1 prom:4xcMyc:mCherry:ncbp-2 ORF:cMyc:hip-1 3'utr & pie-1 prom:gfp:lem-2 ORF:pie-1 3'utr</i>	<i>unc-119(ed3) III; kpIs(pPK46); qals3507</i>	This study
IT297	<i>puf-8 prom:puf-8 ORF:gfp:puf-8 3'utr & tcer-1 prom:tcer-1ORF:mCherry:tcer-1 3'utr</i>	<i>unc-119(ed3) III; kpIs(pMP15); kpIs(pPK20)</i>	This study
IT639	<i>puf-8 prom:puf-8 ORF:gfp:puf-8 3'utr & pie-1 prom:4xcMyc:mCherry:ncbp-2 ORF:cMyc:hip-1 3'utr</i>	<i>unc-119(ed3) III; kpIs(pMP15); kpIs(pPK46)</i>	This study
IT539	<i>puf-8 prom:puf-8 ORF:gfp:puf-8 3'utr</i>	<i>puf-8(ok302) unc-4(e120) / mnC1 II; unc-119(ed3) III; kpIs(pMP15)</i>	This study
IT549	<i>puf-8 prom:puf-8 ORF:gfp:puf-8 3'utr</i>	<i>tcer-1(tm1452) puf-8(zh17) rol-6(e187) / mnC1 II; unc-119(ed3) III; kpIs(pMP15)</i>	This study
IT483	<i>puf-8 prom:puf-8 ORFΔ3-49aa:gfp:puf-8 3'utr</i>	<i>unc-119(ed3) III; kpIs(pPK45)</i>	This study
IT526	<i>puf-8 prom:puf-8 ORFΔ3-49aa:gfp:puf-8 3'utr</i>	<i>puf-8(ok302) unc-4(e120) / mnC1 II; unc-119(ed3) III; kpIs(pPK45)</i>	This study

IT525	<i>puf-8 prom:puf-8 ORFΔ3-49aa:gfp:puf-8 3'utr</i>	<i>tcer-1(tm1452) puf-8(zh17) rol-6(e187) / mnC1 II; unc-119(ed3) III; kpIs(pPK45)</i>	This study
IT445	<i>puf-8 prom:puf-8 ORFΔ51-100aa:gfp:puf-8 3'utr</i>	<i>unc-119(ed3) III; kpIs(pPK39)</i>	This study
IT454	<i>puf-8 prom:puf-8 ORFΔ51-100aa:gfp:puf-8 3'utr</i>	<i>puf-8(ok302) unc-4(e120) / mnC1 II; unc-119(ed3) III; kpIs(pPK39)</i>	This study
IT479	<i>puf-8 prom:puf-8 ORFΔ51-100aa:gfp:puf-8 3'utr</i>	<i>tcer-1(tm1452) puf-8(zh17) rol-6(e187) / mnC1 II; unc-119(ed3) III; kpIs(pPK39)</i>	This study
IT508	<i>puf-8 prom:puf-8 ORFΔ111-143aa:gfp:puf-8 3'utr</i>	<i>unc-119(ed3) III; kpIs(pPK44)</i>	This study
IT535	<i>puf-8 prom:puf-8 ORFΔ111-143aa:gfp:puf-8 3'utr</i>	<i>puf-8(ok302) unc-4(e120) / mnC1 II; unc-119(ed3) III; kpIs(pPK44)</i>	This study
IT536	<i>puf-8 prom:puf-8 ORFΔ111-143aa:gfp:puf-8 3'utr</i>	<i>tcer-1(tm1452) puf-8(zh17) rol-6(e187) / mnC1 II; unc-119(ed3) III; kpIs(pPK44)</i>	This study
IT350	<i>puf-8 prom:puf-8 ORFΔ3-143aa:gfp:puf-8 3'utr</i>	<i>unc-119(ed3) III; kpIs(pPK30)</i>	This study
IT377	<i>puf-8 prom:puf-8 ORFΔ3-143aa:gfp:puf-8 3'utr</i>	<i>puf-8(ok302) unc-4(e120) / mnC1 II; unc-119(ed3) III; kpIs(pPK30)</i>	This study
IT380	<i>puf-8 prom:puf-8 ORFΔ3-143aa:gfp:puf-8 3'utr</i>	<i>tcer-1(tm1452) puf-8(zh17) rol-6(e187) / mnC1 II; unc-119(ed3) III; kpIs(pPK30)</i>	This study
Other strains			
Strain	Genotype	Reference	
IT60	<i>puf-8(zh17) unc-4(e120) / mnC1 II</i>	(Ariz et al., 2009)	
JH1500	<i>puf-8(ok302) unc-4(e120) / mnC1 II</i>	(Subramaniam and Seydoux, 2003)	
IT325	<i>tcer-1(tm1452) II</i>	This study	
IT168	<i>tcer-1(tm1452) puf-8(zh17) rol-6(e187) / mnC1 II</i>	This study	
IT668	<i>ZK1127.6(tm2782) II</i>	This study	
IT235	<i>ZK1127.6(tm2782) puf-8(zh17) rol-6(e187) / mnC1 II</i>	This study	

Table S2. Sequences of PCR primers used for generating the transgene constructs described in this study

Name	Sequence
KS109	TCTGGTACCGGAAATCACCTTTCCCGAGT
KS1222	TCTGCCGGCCTCCCCATCAATGTTCTTTC
KS1223	TCTCCGCGGCGGAAAGTGATTGACCCGTA
KS2132	TCTGGATCCCGAATTCATAGTC
KS2133	TGAGATTCGGGATCCACGTA
KS2134	TCTCCCGGGTTGCTTTCTGCGATCCCGCT
KS2135	TCTCCCGGGATGAGTAAAGGAGAAGAAGTTCAC
KS2315	TCTCCGCGGGCTGTATCCTACACCAACAG
KS2316	TCTGTCGACCAACAAGAGCGGGATCGCAG
KS2326	TCTGTCGACTTATTTGTATAGTTCATCCATGC
KS2361	TCTGGGCCACAACAAGAGCGGGATCGC
KS2944	TCTCCCGGGATGGTCTCAAAGGGTGAAGA
KS2945	TCTGTCGACTTACTTATAACAATTCATCCATGC
KS2978	TCTACTAGTCTTATAACAATTCATCCATGC
KS3022	TCTAGATCTCTATGAGTCGTCCGATTTCAAT
KS3175	TCTGCGGCCGCCTAGGCGTAGTCTGGGACGTCGTATGGGTATTTGTATAGTTCATCCATGCC
KS3303	TCTGCAGGTACCGGGCCCACTCATCAGGAACGCAGATTAC
KS3304	TCTGCAGGGCCCCACCAAGCGCATTCTCAAAG
KS3320	TCTGCAGGGCCCTCGTGAGATCCCTGCATATC
KS3526	CAAATGGGATCCGAGCAGAAGCTCATCTCCGAGGAGGACCTCATGGTCTCAAAGGGTGAAGA
KS3551	TCTGCAGGTACCGGGCCCGGTAGAAATATGACGGCCAT
KS3609	TCTGCAGGGCCCTCTAATGTTCGGTCATGTCTTG
KS3612	TCTGCAGGGCCCGATAGTACTCAAGACATGACC

KS3675	TCTGCAGGGCCCACCAATCCAAAAAATGAACGCC
KS3703	TATAAGACTAGTATGGTCTTCGATCCAAGAAC
KS3704	CCTTAAGGCGCCTTAGAGGTCCTCCTCGGAGATGAGCTTCTGCTCACCTTTTTGAGCAATAGCGC
KS3709	TCTGACAGATCTGAGCAGAAGCTCATCTCCGAGGAGGACCTCGAGCAGAAGCTCATCTCCGAGGAGG
KS3710	GTCAGAGGATCCGAGGTCCTCCTCGGAGATGAGCTTCTGCTCGAGGTCCTCCTCGGAGATGAGCTTC

Table S3. Sequences of PCR primers used for RNA quantitation

RNA	Primer name	Sequence	Fold enrichment with MBP::PUF-8*
<i>cyb-2.1</i>	2241	ATGTTGCGAGTTACTACAAGC	3.79
	3087	TCTCCCGGGTTCATTCTGATGTTTCAGCTTC	
<i>fbf-1</i>	1666	TCTCTAATCGACATGGACCAATC	
	1662	GTTACGATCAATCTCGGTAG	
<i>fbf-2</i>	2665	GCTCGCCATCAACAGAATCA	
	2666	ATCCATGTTCTGGAGACTGG	
<i>egg-5</i>	3321	TCTCCCGGGATGGCGTTGAACAGCGAAGTG	4.58
	2900	GCTCCATTCTCCGATGATGG	
<i>hip-1</i>	2409	TCAGAAGGCCGATATCGAGC	5.15
	2410	TGTTGTGGGACAGAAGCTCC	
<i>mex-3</i>	1086	TCTCCATGGGCATGAAGGAAGAACAAATCGC	
	1087	TCTCTCGAGTTATCCATTGATCGGCACGAG	
<i>mex-5</i>	1030	TCTCCATGGGCATGAAAGCGGCATCAAATAGTG	
	1031	TCTCTCGAGCTAATAGTGTCTCTTAGTCCG	
<i>oma-1</i>	1539	TCTGAATTCATGAACGTTAACGGTGAAAAC	
	1540	TCTGAATTCTTCTAAAGGATGCTGAATGGC	
<i>oma-2</i>	1541	TCTGAATTCATTCGATGCAAATGAGAGC	
	1542	TCTGAATTCGAGTGGAGACGAATCACTAT	
<i>pal-1</i>	1178	TCTTCTAGATGTTCGGTCGATGTCAAGTC	3.8
	1179	TCTTCTAGAGCCGAATCTTCTGTTTGT	
<i>pgl-1</i>	2669	GGAGCTTCCAAAGACGCTCC	
	2670	CTTGGATGATGTGATTGCCG	
<i>pie-1</i>	1034	TCTCCATGGCTCAAACAAAGCCGATT	
	1035	TCTCTCGAGTTAGGAAATAATAGTTGGTGG	

<i>pos-1</i>	1028	TCTCCATGGCTGACAACGATTTCT	6.62
	1029	TCTCTCGAGCTAGTGATGATGGGAGGAGA	
<i>puf-5</i>	2675	GATCTCAGCATTTTCAACGG	4.43
	2676	TTCTGGATCGACATCTGCAC	
<i>rme-2</i>	2695	CGGCATCATTCAATGGCTTC	
	2696	TTCGGCGTCGTCAGAAATCG	
<i>spn-4</i>	1088	TCTCCATGGGCATGCAAAACACACAGATATTTACTAAC	4.86
	1089	TCTCTCGAGTTACTGGCTTGACGATTCTTTTG	
<i>cyb-2.1 pre-mRNA</i>	2241	ATGTTGCGAGTTACTACAAGC	
	3546	GAGGCAACGAACCTGAAATC	
<i>egg-5 pre-mRNA</i>	3157	TCTCCCGGGGAATTCGAAGACGCTCTTCGC	
	3548	CCAACCTACAAGTTTGTATCAG	
<i>pal-1 pre-mRNA</i>	3545	CTGACCAGCTCGCAGAGATA	
	1179	TCTTCTAGAGCCGAATCTTCTGTTTGT	
<i>pos-1 pre-mRNA</i>	1028	TCTCCATGGCTGACAACGATTTCC	
	2700	CGAGGCTGAAAATTCCAGTC	
<i>spn-4 pre-mRNA</i>	2839	CAGGTAAATTTGTCGTGCCG	
	1089	TCTCTCGAGTTACTGGCTTGACGATTCTTTTG	

*Fold enrichment values are given only for the mRNAs that showed significant enrichment (Mainpal et al., 2011).

Table S4. DNA-binding domain fusions tested in the yeast two-hybrid assay

Name	Part of PUF-8 sequence cloned in pGBDU-C2	PCR primers	
PUF8-BD	Amino acids 1-535 (full-length)	KS3022	Table S2
		KS3024	TCTAGATCTCTAGTGAGATCCCTGCATAT
Partial PUF8-BD	Amino acids 143-535 (Δ 1-143 aa)	KS3023	TCTAGATCTCTATGCACCAAGCGCATTCTCA
		KS3024	TCTAGATCTCTAGTGAGATCCCTGCATAT
N1-BD	Amino acids 1-173 (Δ 174-535 aa)	KS3022	Table S2
		KS3181	TCTGGATCCGGTGGTTGTTGGTTCCCTGT
N16-BD	Amino acids 1-50 and 101-535 (Δ 51-100 aa)	KS3022 and KS3551 for 1-50aa, and KS3609 and KS3320 for 101-535aa; all four sequences are given Table S2	
N18-BD	Amino acids 1-110 and 144-535 (Δ 111-143 aa)	KS3022 and KS3612 for 1-110aa, and KS3304 and KS3320 for 144-535aa; all four sequences are given Table S2	
N20-BD	Amino acids 51-535 (Δ 1-50 aa)	KS3645	TCTGCACCCGGGCAATCCAAAAAATGAACGCC
		KS3646	TCTGCACCCGGGCTAGTGAGATCCCTGCATAT

Table S5. Proteins tested for interaction with PUF-8 and TCER-1 in the yeast two-hybrid assay

Name	Yeast homologue*	Mammalian homologue*	Functional description [#]
PHI-11	HSH155	SF3B1	Splicing factor 3b subunit 1
PRP-21	PRP21	SF3A1	Splicing factor 3a subunit 1
UAF-1	MRD1	U2AF2	Large subunit of the splicing factor U2AF
LSM-4	LSM4	LSM4	Small nuclear ribonucleoprotein (snRNP)
LSM-8	LSM1	NAA38	snRNP
<u>SNR-3</u>	Sm D1	SNRPD1	Sm D1 is a part of heteroheptameric complex that is part of the spliceosomal U1, U2, U4 and U5 snRNPs [‡]
THOC-1		THOC1	THOC complex component; THOC complex links transcription elongation and mRNA export machinery
THOC-2	THO2	THOC2	Same as above
<u>THOC-3</u>	TEX1	THOC3	TEX1 is a component of the transcription export (TREX) complex required for nuclear mRNA export [‡]
DDX-19	DBP5	DDX19	DEAD-box helicase involved in mRNA export from the nucleus [‡]
NXF-1	MEX67	NXF1	Shuttling transport receptor for nuclear export of mRNA
RSP-3	NPL3	SRSF1	Required for splicing; influences alternative splicing
HEL-1	SUB2	DDX39	Component of the TREX complex
ALY-1	YRA1	ALYREF	RRM motif protein; required for export of TRA-1/tra-2 mRNA complexes
ALY-2	YRA1	ALYREF	RRM motif protein; required for export of TRA-1/tra-2 mRNA complexes
ALY-3		ALYREF	RRM motif protein; thought to promote recruitment of mRNA export factors to mRNAs
NXT-1	NTF2	NXT1	RNA export factor
C27F2.10	THP1	PCID2	Nuclear pore-associated protein; component of the TREX-2 complex [‡]
IFE-1	CDC33	EIF4E	eIF4E homolog
IFE-5	CDC33	EIF4E	Same as above
IFG-1	TIF4631	EIF4G	eIF4G
PAB-1	PAB1	PABPC	Polyadenylate-binding protein
NCBP-2	CBC2	NCBP2	<i>C. elegans</i> ortholog of the CBP20 subunit of the nuclear cap binding protein complex
NPP-1	Nup57	NUP54	Nuclear pore complex component; Central FG Nup ^{§,¶}
NPP-4	Nup49	NUP62	Same as above
NPP-7	Nup60	NUP153	Nuclear pore complex component; Nuclear FG Nup ^{§,¶}
NPP-10	Nup145N	NUP98-	Nuclear pore complex component; Central FG Nup ^{§,¶}

		NUP96	
NPP-11	Nsp1	NUP62	Same as above
NPP-14	Nup159	NUP214	Nuclear pore complex component; Cytoplasmic FG Nup ^{§,¶}
RAE-1	Gle2	RAE1	Nuclear pore complex component; Required for mRNA export ^{§,***}
NPP-21	MLP1	TPR	Myosin-like protein associated with the nuclear envelope, connects the nuclear pore complex with the nuclear interior [‡]

Protein names shown in bold were positive for interaction with PUF-8 in the yeast two-hybrid assay (see Fig. 4A).

Protein names underlined were positive for interaction with TCER-1 in the yeast two-hybrid assay (see Fig. 4A).

*For convenience, the corresponding more familiar yeast and mammalian homologues are also listed.

#Unless an additional reference is provided the functional description is from www.wormbase.org.

‡www.yeastgenome.org.

§(Galy et al., 2003).

¶(Strambio-De-Castillia et al., 2010).

*** (Rodriguez et al., 2004).